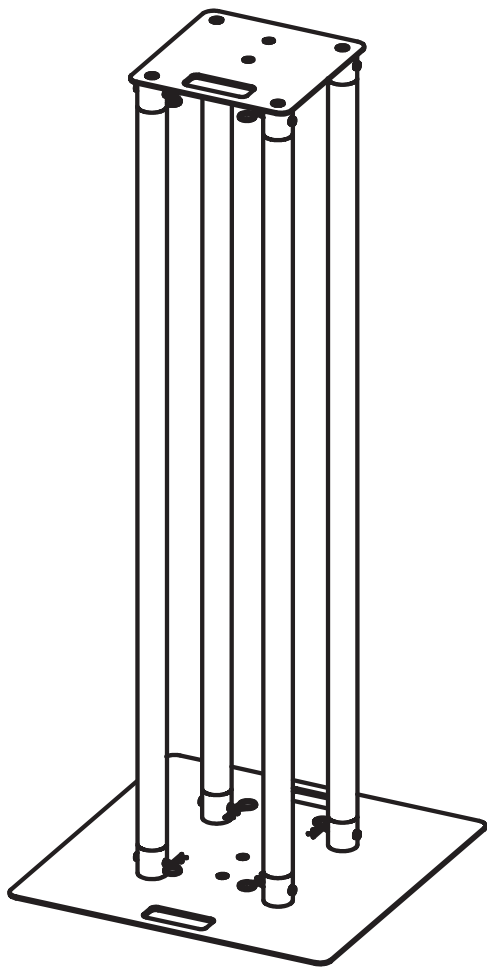


EQUINOX

Truss Plinth Kit

User Manual



Order codes:

1.0m - TRUS060

1.5m - TRUS061

2.0m - TRUS062

2.5m - TRUS063

WARNING

FOR YOUR OWN SAFETY, PLEASE READ THIS USER MANUAL CAREFULLY BEFORE YOUR INITIAL SET-UP!

- Before your initial set-up, please make sure that there is no damage caused during transportation.
- Should there be any damage, consult your dealer and do not use the equipment.
- To maintain the equipment in good working condition and to ensure safe operation, it is necessary for the user to follow the safety instructions and warning notes written in this manual.
- Please note that damages caused by user modifications to this equipment are not subject to warranty.

IMPORTANT:

The manufacturer will not accept liability for any resulting damages caused by the non-observance of this manual or any unauthorised modification to the equipment.

WARRANTY: One year from date of purchase

Truss Plinth Kit

Our Truss Plinth Kits are available in 4 heights and come supplied with all fixings. They also include a white lycra scrim and speaker adaptor.

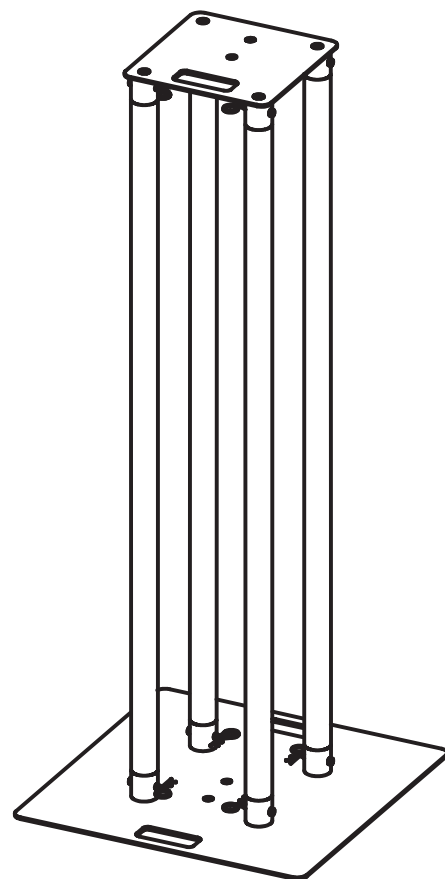
The construction and design makes the plinths strong and sturdy, whilst the conical connectors allow for a quick assembly and make transportation easy. The top plate features bolt holes for securely mounting a variety of lighting fixtures, and they also come supplied with a 35mm adaptor that bolts to the top plate allowing speakers to sit safely on top of the plinths.

The supplied scrim provides the perfect coverage for the plinth giving a clean look. Why not add a slimline style par can or light effect within the base area of the plinth, illuminating it from within.

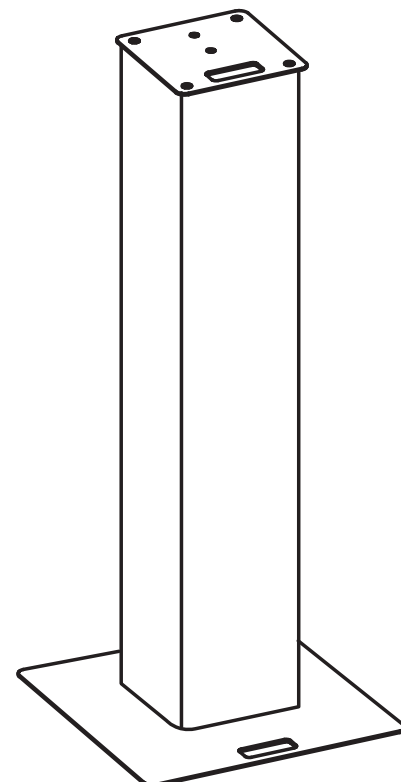
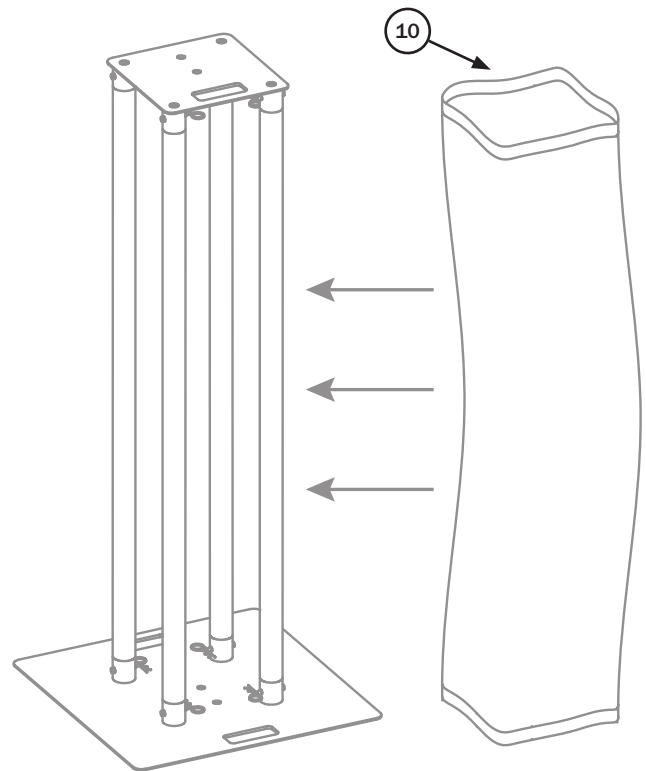
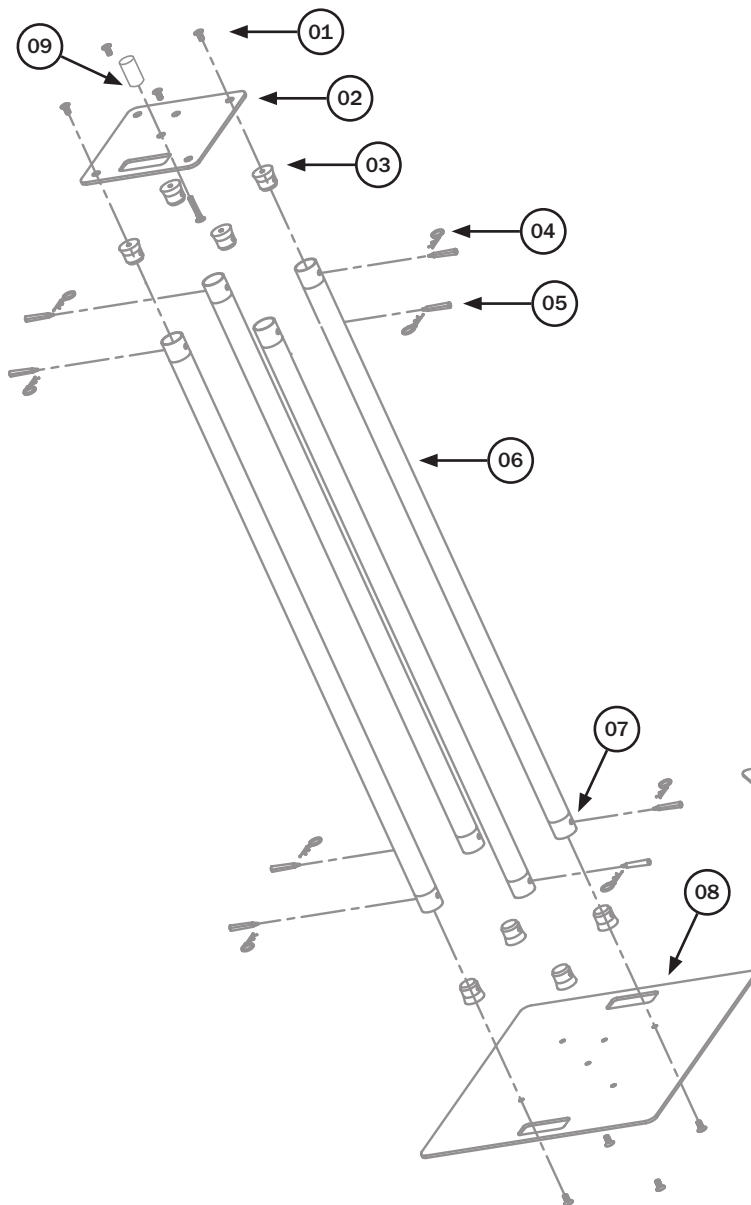
Our plinths are ideal for a wide variety of applications including mobile DJs, events, exhibitions, pubs, weddings and marquees.

- Kit comes complete with fixings, 35mm adaptor and white lycra scrim
- 50mm aluminium poles come with conical connectors for quick assembly and connection to the top and base plates
- 6mm thick top and base plates feature cutout handles for easy transportation
- Lycra scrim: Hand wash only at 30° and do not tumble dry

Specifications	
Footprint	610 x 610mm
Top plate dimensions	305 x 305 x 6mm
Base plate dimensions	610 x 610 x 6mm
Order codes: 1.0m version	TRUS060
1.5m version	TRUS061
2.0m version	TRUS062
2.5m version	TRUS063



In the kit:
4 x 50mm aluminium poles,
1 x white lycra scrim,
1 x baseplate, 1 x top plate,
8 x half conical connectors
with bolts, pins and R clips
1 x 35mm speaker pole adaptor
2 x carry bag



Part number	Part details	Qty supplied
1	M10 screw	8
2	Top plate	1
3	Half connical connector	8
4	R pin	8
5	Conical pin	8
6	50mm aluminium poles	4
7	Pole ends	8
8	Base plate	1
9	35mm adaptor	1
10	White lycra scrim	1

Truss Plinth Kits

Our Truss Plinth Kits are available in 4 heights...

